

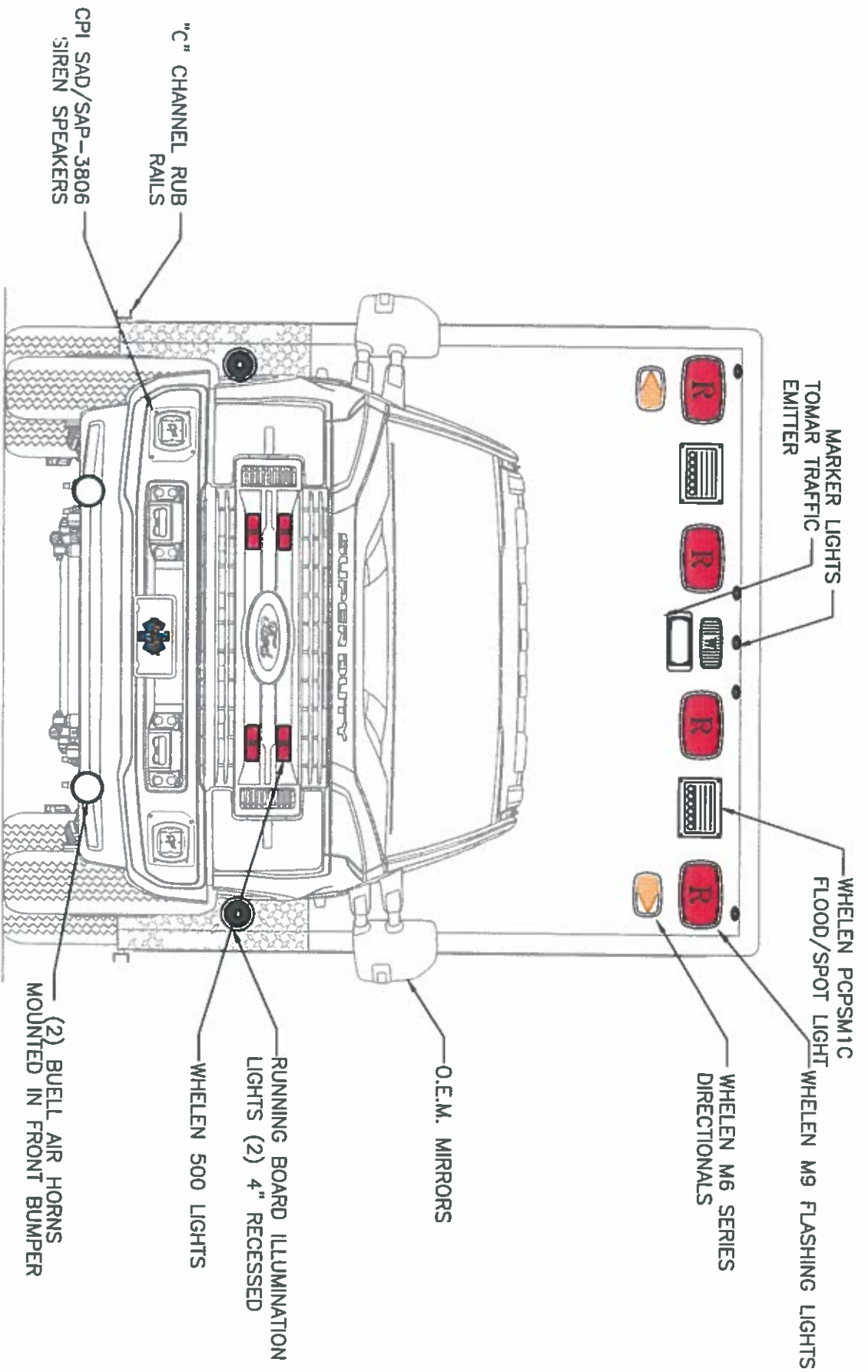
CUSTOM DESIGNED FOR
NORWELL
BY
P.L. CUSTOM
EMERGENCY VEHICLES

- A5263

PAGE 1



NOTICE
This drawing and data thereon shall not be duplicated, used or disclosed to others for procurement or manufacturing purposes, except as otherwise authorized by contract, order, purchase order or P.L. CUSTOM. P.L. CUSTOM shall retain the right to make changes of any kind without notice, in materials, equipment & specifications. Written specifications take precedence over drawings which are for clarity only. All reproductions shall bear the notice.

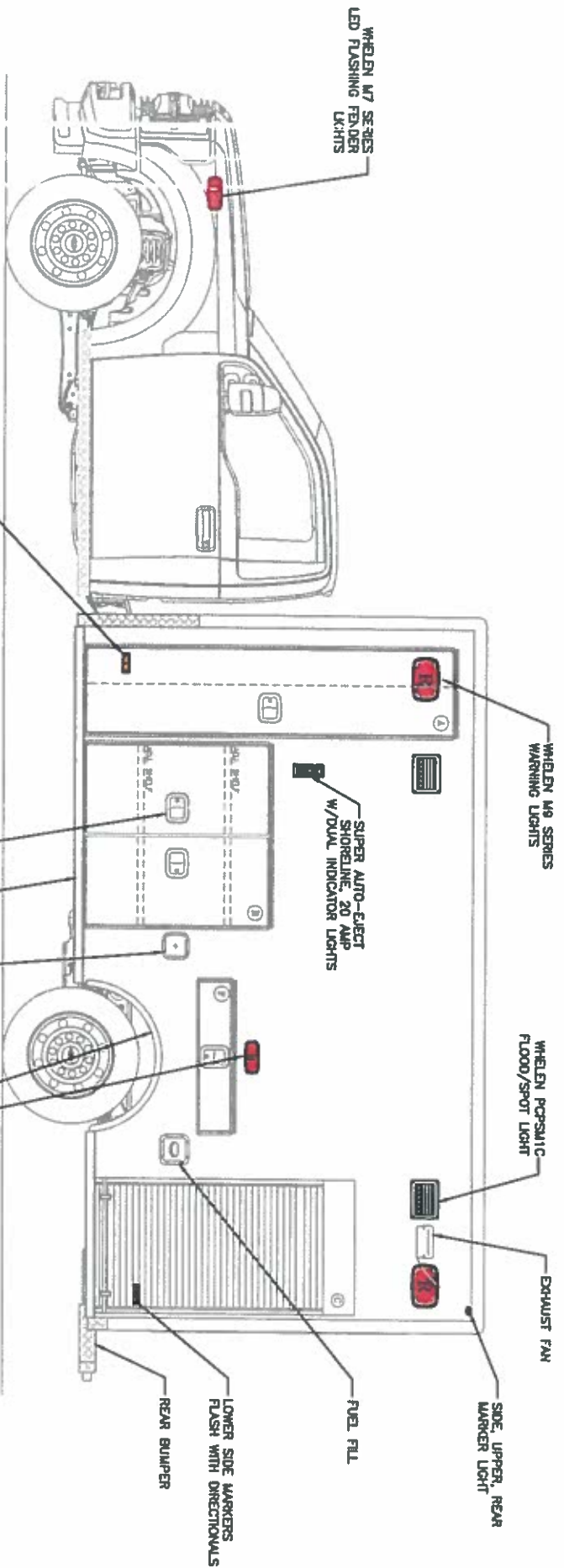


EXTERIOR DIMENSIONS
 HEIGHT 115" (+/-2)
 LENGTH 170"
 WIDTH 99"

FRONT VIEW



"NOTICE"
 This drawing and data thereon shall not be duplicated, used or disclosed to others for procurement or manufacturing purposes, without the written authority of PL Custom Body & Equipment Co., Inc. We reserve the right to make changes at any time, without notice, in materials, equipment & specifications. Written specifications take precedence over drawings which are for clarity only. All reproductions shall bear this notice.



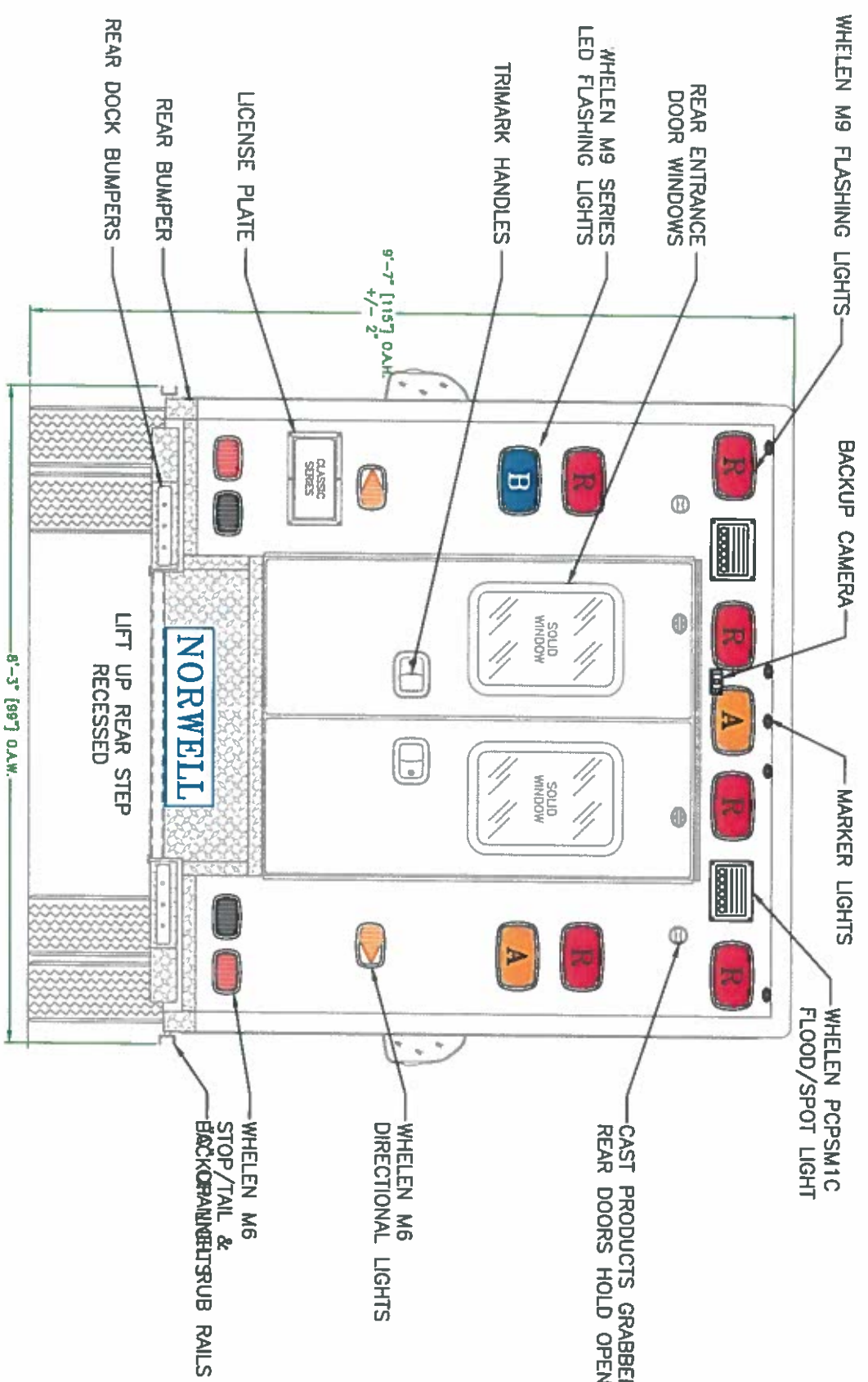
OPENING DESCRIPTIONS				
ALL DIMENSIONS APPROXIMATE				
	WIDTH	HEIGHT	DEPTH	PURPOSE
(A)	20	86	21	OXYGEN STORAGE
(B)	43 3/8	42	20	EXTERIOR STORAGE
(C)	32	59	20	EXTERIOR STORAGE
(F)	32	5	16	PULL OUT DRAWER

EXTERIOR DIMENSIONS
 HEIGHT 115" (+/-2)
 LENGTH 170"
 WIDTH 99"

- NOTES:**
- 1) DRAWINGS ARE FOR REPRESENTATIONAL PURPOSES ONLY.
 - 2) ALL DIMENSIONS SHOWN ARE APPROXIMATE.
 - 3) EXTERIOR COMPARTMENT DIMENSIONS REFLECT WALL TO WALL MEASUREMENTS. PASS THROUGH OPENINGS WILL BE SMALLER.
 - 4) INTERIOR CABINET DIMENSIONS REFLECT THE CABINET OPENING. PASS THROUGH OPENINGS WILL BE SMALLER.
 - 5) DIMENSIONS FOR OVERALL HEIGHT AND OVERALL LENGTH ARE APPROXIMATE UNTIL THE CHASSIS IS BUILT AND RECEIVED AT OUR FACTORY.



NOTICE
 This drawing and data thereon shall not be duplicated, used or disclosed to others for procurement or manufacturing purposes, except as otherwise authorized by contract, without written permission of PLCUSTOMER & EQUIPMENT CO., INC. We reserve the right to modify any dimensions, specifications, materials, equipment, & standards. Written specifications take precedence over drawings which are for clarity only. All reproductions shall bear this notice.



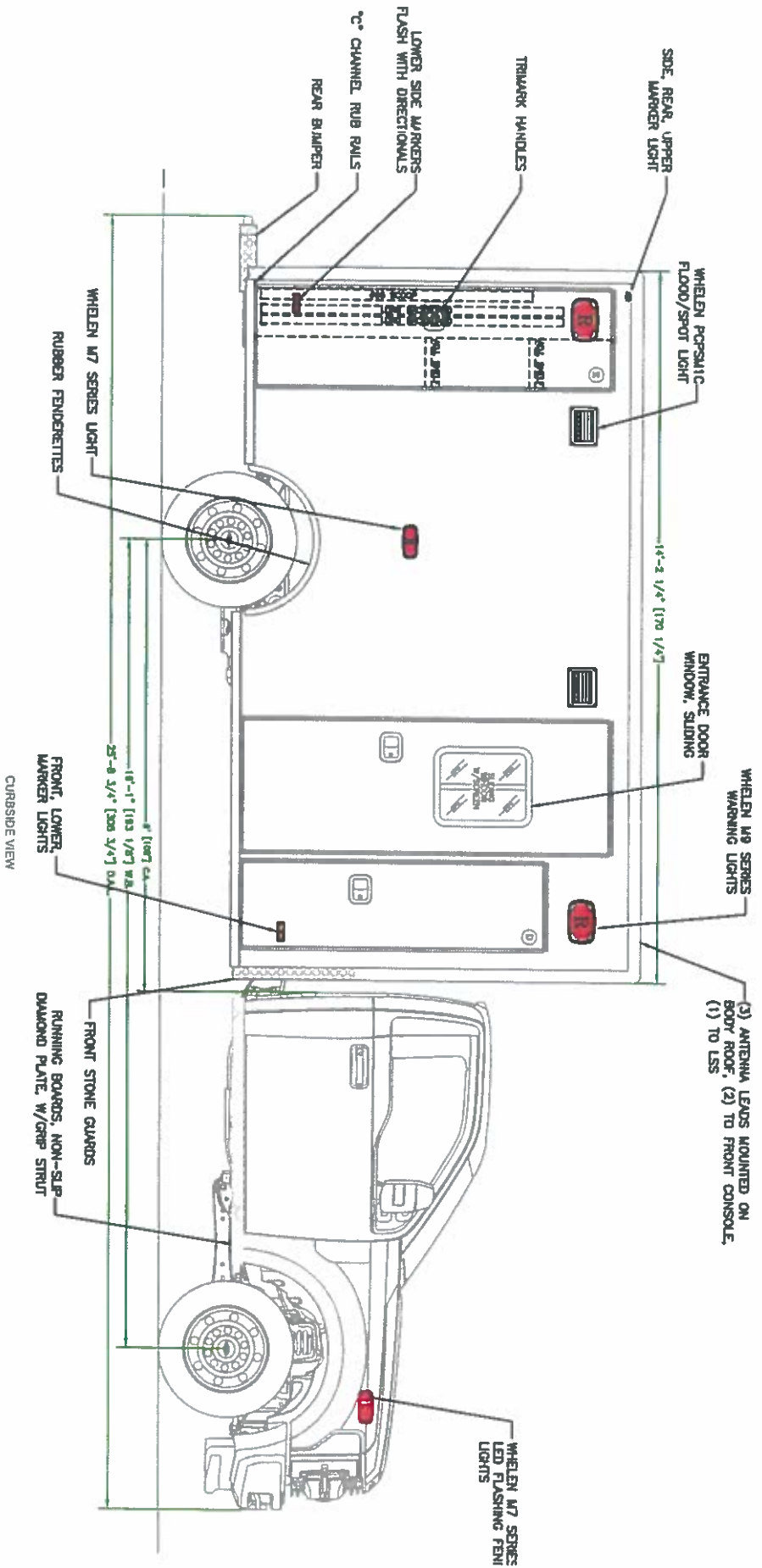
REAR VIEW

OPENING DESCRIPTIONS			
ALL DIMENSIONS APPROXIMATE			
WIDTH	HEIGHT	DEPTH	PURPOSE
44 1/4	61		REAR ENTRANCE DOORS

- NOTES:
- 1) DRAWINGS ARE FOR REPRESENTATIONAL PURPOSES ONLY.
 - 2) ALL DIMENSIONS SHOWN ARE APPROXIMATE.
 - 3) EXTERIOR COMPONENT DIMENSIONS REFLECT WALL WILL BE SMALLER.
 - 4) INTERIOR CABINET DIMENSIONS REFLECT THE CHEAPEST OPTIONING. PASS THROUGH DIMENSIONS WILL BE SMALLER.
 - 5) DIMENSIONS FOR OVERALL HEIGHT AND ORIGINAL LENGTH ARE APPROXIMATE UNTIL THE CUSTOMER IS BUILT AND RECEIVED AT OUR FACTORY.



NOTICE:
 This drawing and data thereon shall not be duplicated, used or disclosed to others for procurement or manufacturing purposes, except as otherwise authorized by contract, without written permission of PLCUSTOM. PLCUSTOM shall not be held liable for any damage or loss of equipment or materials, in material, equipment & specifications, written specifications take precedence over drawings which are for clarity only. All reproductions shall bear this notice.



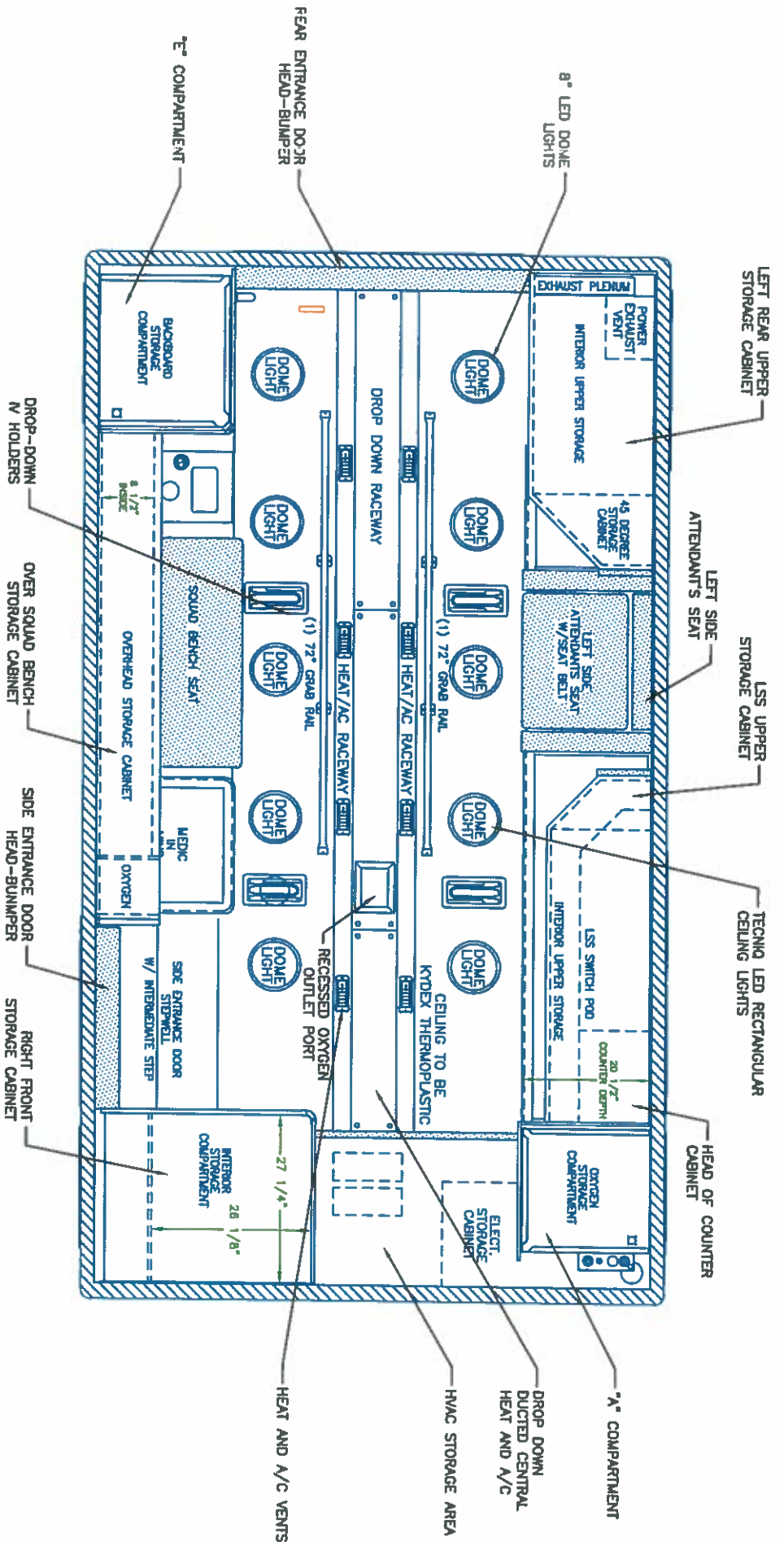
OPENING DESCRIPTIONS			
ALL DIMENSIONS APPROXIMATE			
WIDTH	HEIGHT	DEPTH	PURPOSE
D	20	33" ABOVE FLOOR	INTERIOR/EXTERIOR ACCESS STORAGE
E	24 1/2	20" BELOW FLOOR	BACKBOARD STORAGE
	29	80	SIDE ENTRANCE DOOR

EXTERIOR DIMENSIONS
 HEIGHT 115" (+/-2)
 LENGTH 170"
 WIDTH 99"

- NOTES**
- 1) DRAWINGS ARE FOR REPRESENTATIONAL PURPOSES ONLY
 - 2) ALL DIMENSIONS SHOWN ARE APPROXIMATE.
 - 3) EXTERIOR COMPARTMENT DIMENSIONS REFLECT WALL TO WALL MEASUREMENTS. PASS THROUGH OPENINGS WILL BE SMALLER.
 - 4) INTERIOR CABINET DIMENSIONS REFLECT THE CABINET OPENING. PASS THROUGH OPENINGS WILL BE SMALLER.
 - 5) DIMENSIONS FOR OVERALL HEIGHT AND OVERALL LENGTH ARE APPROXIMATE UNTIL THE CHASSIS IS BUILT AND RECEIVED AT OUR FACTORY.



NOTICE
 This drawing and data thereon shall not be duplicated, used or disclosed to others for procurement or manufacturing purposes, except as otherwise authorized by contract, without written permission of P.L. CUSTAR & EQUIPMENT CO., INC. We reserve the right to make changes to this drawing and data without notice. Specifications and specifications drawings which are for clarity only. All reproductions shall bear this notice.



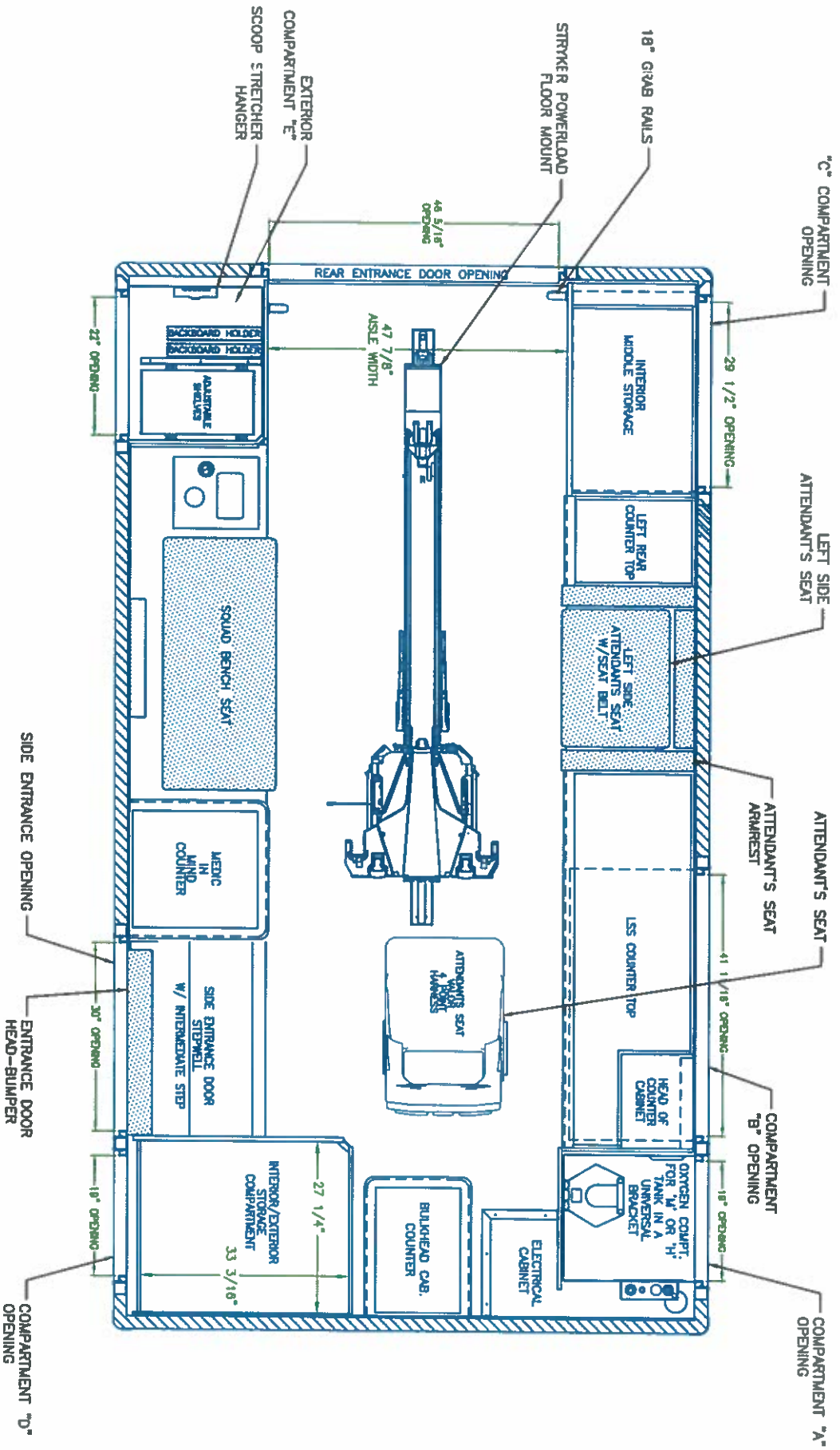
CEILING VIEW

NOTES:

- 1) DRAWINGS ARE FOR REPRESENTATIONAL PURPOSES ONLY.
- 2) ALL DIMENSIONS SHOWN ARE APPROXIMATE.
- 3) EXTERIOR COMPARTMENT DIMENSIONS REFLECT WALL TO WALL MEASUREMENTS. PASS THROUGH OPENINGS WILL BE SMALLER.
- 4) INTERIOR CABINET DIMENSIONS REFLECT THE CABINET OPENING. PASS THROUGH OPENINGS WILL BE SMALLER.
- 5) DIMENSIONS FOR OVERALL HEIGHT AND OVERALL LENGTH ARE APPROXIMATE UNTIL THE CHASSIS IS BUILT AND RECEIVED AT OUR FACTORY.



NOTICE:
 This drawing and data thereon shall not be duplicated, used or disclosed to others for procurement or manufacturing purposes, except as otherwise authorized by contract, without written permission of P.L. CUSTOM, INC. or EQUIPMENT CO., INC. We reserve the right to make changes in design, materials, specifications, and dimensions, without written specifications, take precedence over drawings which are for clarity only. All reproductions shall bear this notice.

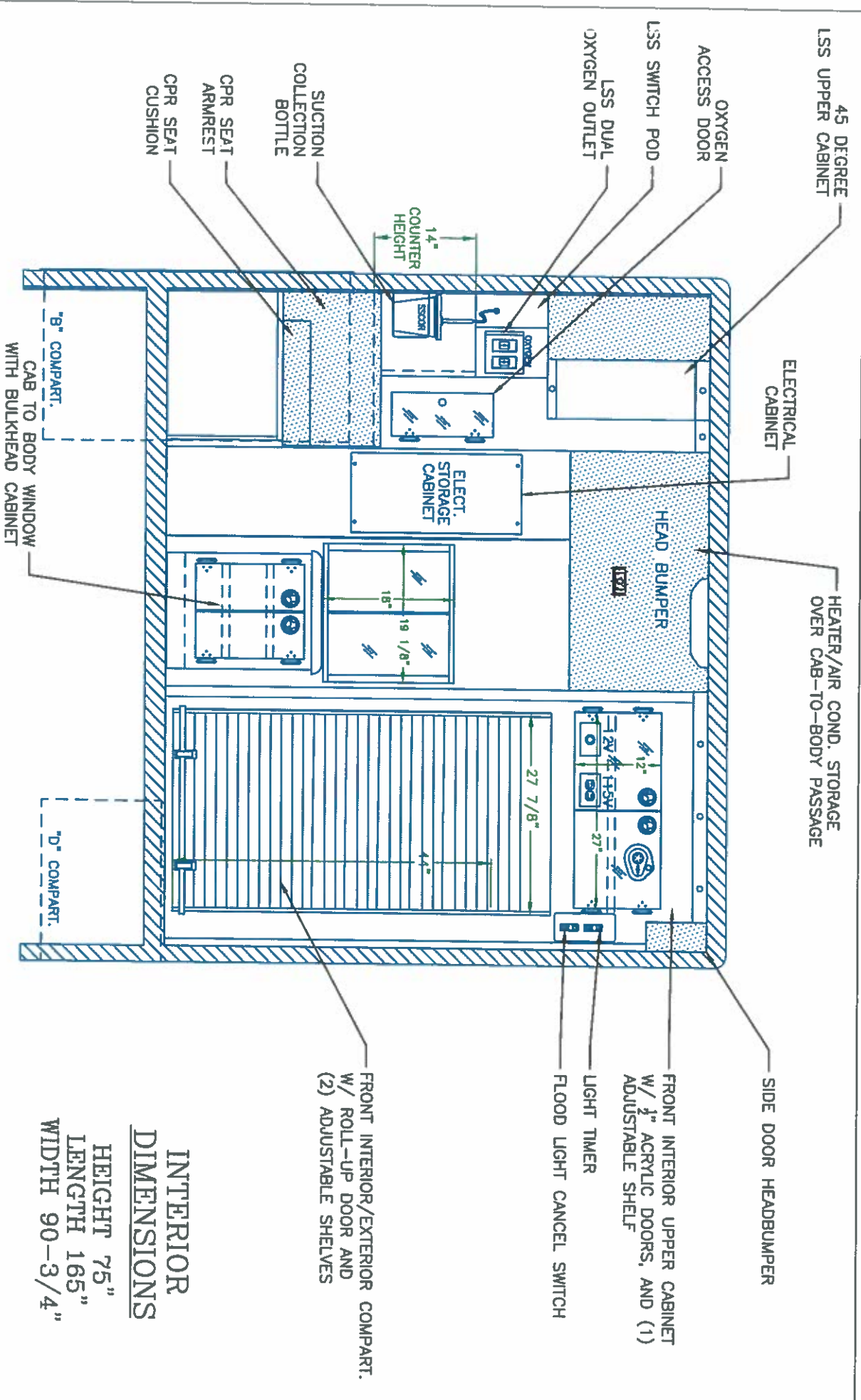


FLOOR PLAN

- NOTES:**
- 1.) DRAWINGS ARE FOR REPRESENTATIONAL PURPOSES ONLY.
 - 2.) ALL DIMENSIONS SHOWN ARE APPROXIMATE.
 - 3.) EXTERIOR COMPARTMENT DIMENSIONS REFLECT WALL TO WALL MEASUREMENTS. PASS THROUGH OPENINGS WILL BE SMALLER.
 - 4.) INTERIOR CABINET DIMENSIONS REFLECT THE CABINET OPENING. PASS THROUGH OPENINGS WILL BE SMALLER.
 - 5.) DIMENSIONS FOR OVERALL HEIGHT AND OVERALL LENGTH ARE APPROXIMATE UNTIL THE CHASSIS IS BUILT AND RECEIVED AT OUR FACTORY.



NOTICE
 This drawing and data thereon shall not be duplicated, used or disclosed to others for procurement or manufacturing purposes, except on advance authorization by contract, without written permission of PLC SYSTEM, INC. or its authorized agent. All rights are reserved. The reader is notified that PLC SYSTEM, INC. does not warrant the written specifications, use, presentation over drawings which are for clarity only. All reproductions shall bear this notice.



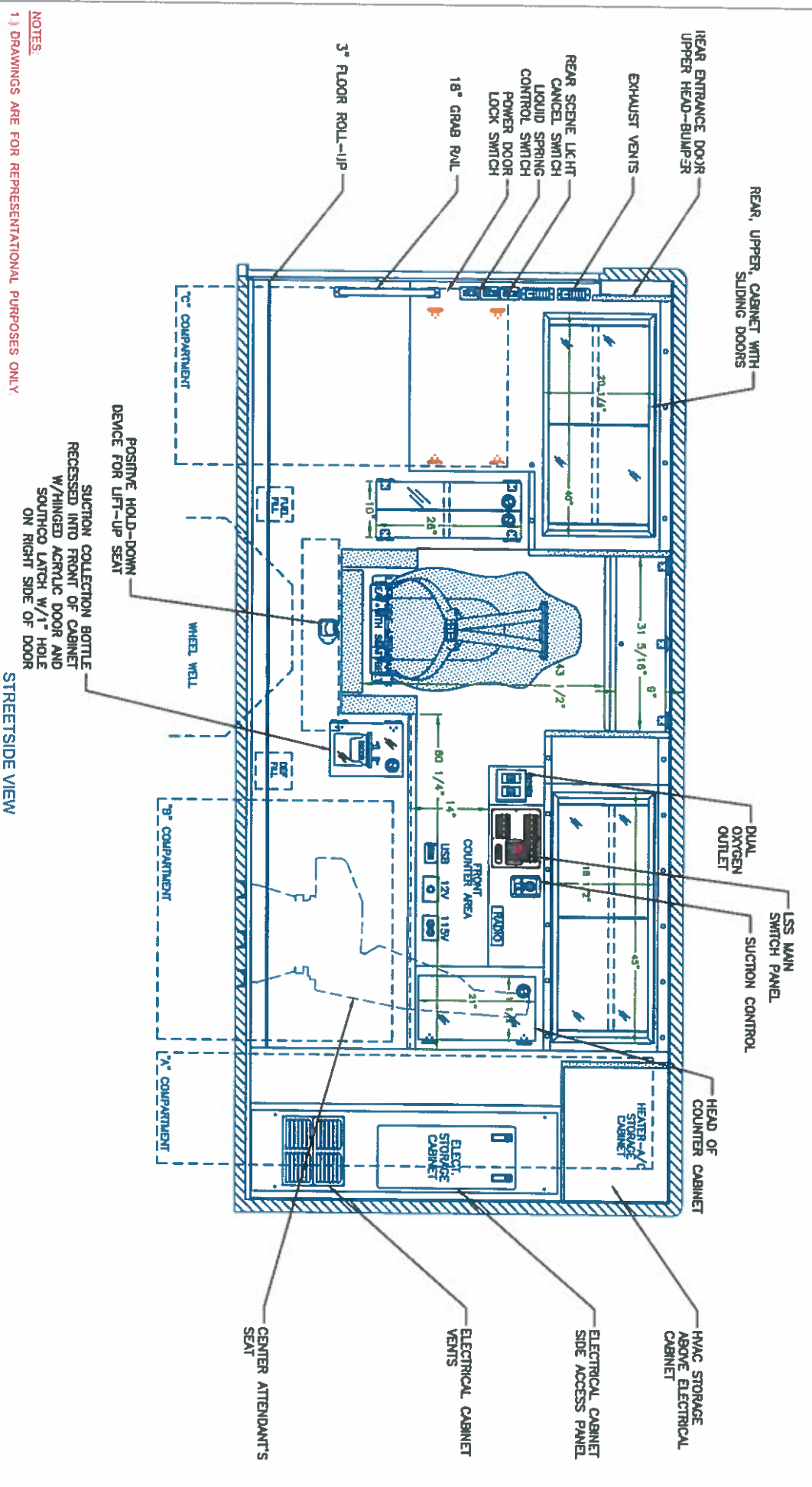
FRONT VIEW

INTERIOR DIMENSIONS
 HEIGHT 75"
 LENGTH 165"
 WIDTH 90-3/4"

- NOTES:**
- 1.) DRAWINGS ARE FOR REPRESENTATIONAL PURPOSES ONLY.
 - 2.) ALL DIMENSIONS SHOWN ARE APPROXIMATE.
 - 3.) EXTERIOR COMPARTMENT DIMENSIONS REFLECT WALL TO WALL MEASUREMENTS. PASS THROUGH OPENINGS WILL BE SMALLER.
 - 4.) INTERIOR CABINET DIMENSIONS REFLECT THE CABINET OPENING. PASS THROUGH OPENINGS WILL BE SMALLER.
 - 5.) DIMENSIONS FOR OVERALL HEIGHT AND OVERALL LENGTH ARE APPROXIMATE UNTIL THE CHASSIS IS BUILT AND RECEIVED AT OUR FACTORY.



"NOTICE"
 This drawing and data thereon shall not be duplicated, used or disclosed to others for procurement or manufacturing purposes, except on written permission of PL Custom, INC. & EQUIPMENT CO., INC. We reserve the right to alter designs at any time, without notice. In instances of any changes, written specifications take precedence over drawings which are for clarity only. All reproductions shall bear this notice.



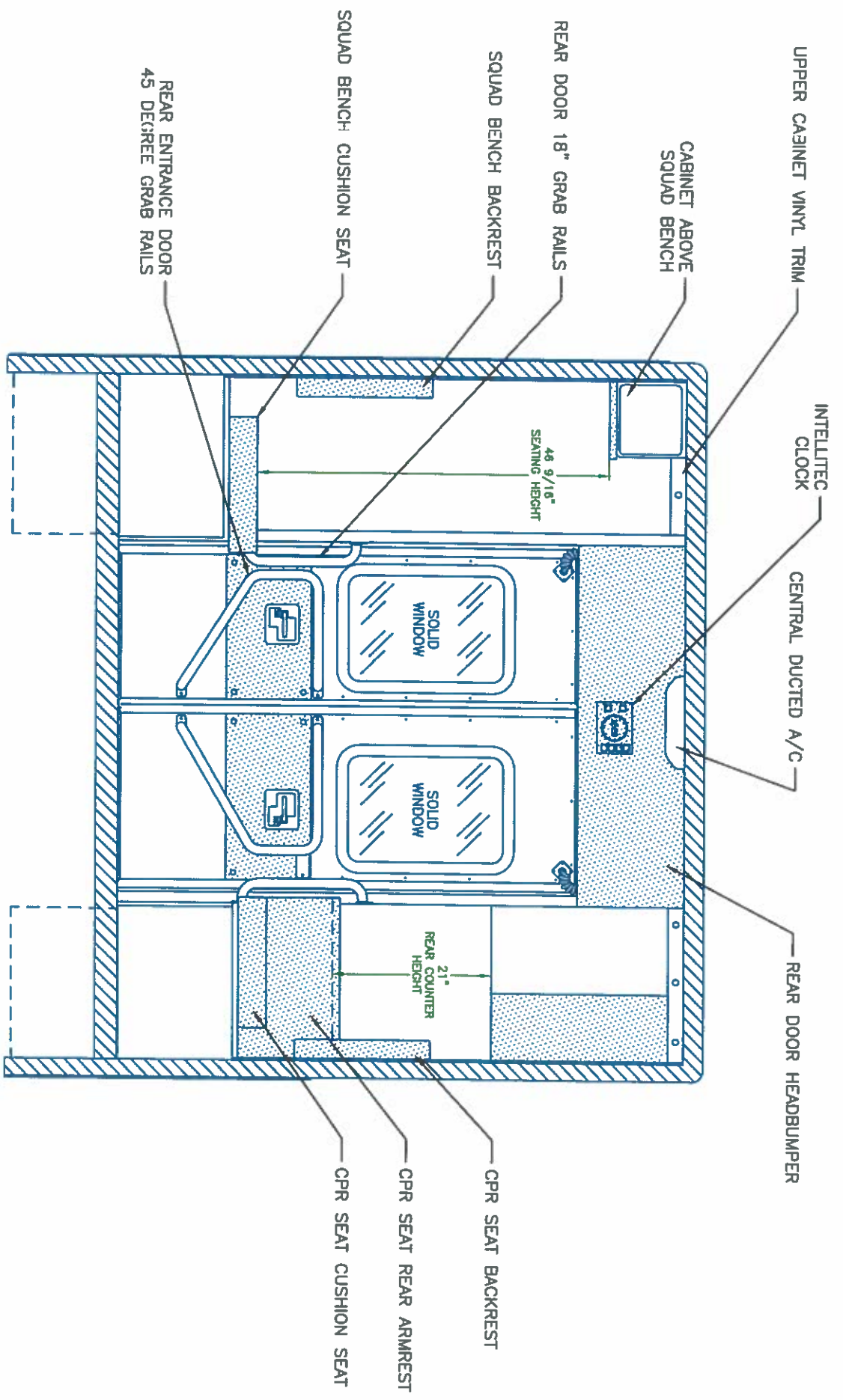
- NOTES:**
- 1) DRAWINGS ARE FOR REPRESENTATIONAL PURPOSES ONLY
 - 2) ALL DIMENSIONS SHOWN ARE APPROXIMATE.
 - 3) EXTERIOR COMPARTMENT DIMENSIONS REFLECT WALL TO WALL MEASUREMENTS. PASS THROUGH OPENINGS WILL BE SMALLER.
 - 4) INTERIOR CABINET DIMENSIONS REFLECT THE CABINET OPENING. PASS THROUGH OPENINGS WILL BE SMALLER.
 - 5) DIMENSIONS FOR OVERALL HEIGHT AND OVERALL LENGTH ARE APPROXIMATE UNTIL THE CHASSIS IS BUILT AND RECEIVED AT OUR FACTORY.

INTERIOR DIMENSIONS

HEIGHT 75"
 LENGTH 165"
 WIDTH 90-3/4"



NOTICE
 This drawing and data thereon shall not be duplicated, used or disclosed to others for procurement or manufacturing purposes, except as otherwise authorized by contract. PL Custom shall retain the right to make changes of any kind without notice, in materials, equipment & specifications. Written specifications take precedence over drawings which are for clarity only. All reproductions shall bear this notice.

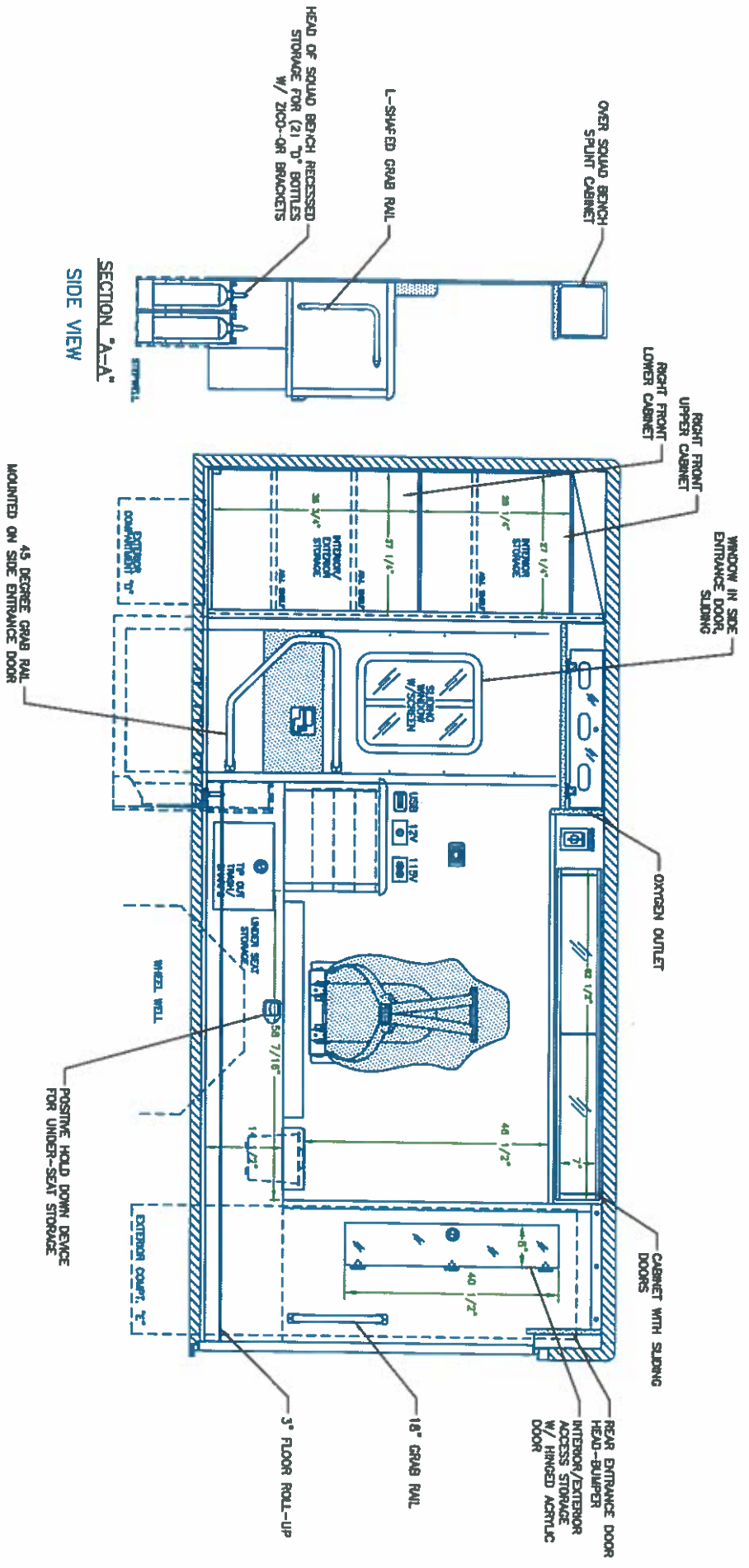


- NOTES:**
- 1) DRAWINGS ARE FOR REPRESENTATIONAL PURPOSES ONLY.
 - 2) ALL DIMENSIONS SHOWN ARE APPROXIMATE.
 - 3) EXTERIOR COMPARTMENT DIMENSIONS REFLECT WALL TO WALL MEASUREMENTS. PASS THROUGH OPENINGS WILL BE SMALLER.
 - 4) INTERIOR CABINET DIMENSIONS REFLECT THE CABINET OPENING. PASS THROUGH OPENINGS WILL BE SMALLER.
 - 5) DIMENSIONS FOR OVERALL HEIGHT AND OVERALL LENGTH ARE APPROXIMATE UNTIL THE CHASSIS IS BUILT AND RECEIVED AT OUR FACTORY.

REAR VIEW



"NOTICE"
 This drawing and data thereon shall not be duplicated, used or disclosed to others for procurement or manufacturing purposes, except as otherwise authorized by contract. BODY & EQUIPMENT CO., INC. The name, logo, and other marks of BODY & EQUIPMENT CO., INC. are the property of BODY & EQUIPMENT CO., INC. The name, logo, and other marks of BODY & EQUIPMENT CO., INC. are the property of BODY & EQUIPMENT CO., INC. The name, logo, and other marks of BODY & EQUIPMENT CO., INC. are the property of BODY & EQUIPMENT CO., INC. All reproductions shall bear the notice.



- NOTES**
- 1.) DRAWINGS ARE FOR REPRESENTATIONAL PURPOSES ONLY.
 - 2.) ALL DIMENSIONS SHOWN ARE APPROXIMATE.
 - 3.) EXTERIOR COMPARTMENT DIMENSIONS REFLECT WALL TO WALL MEASUREMENTS. PASS THROUGH OPENINGS WILL BE SMALLER.
 - 4.) INTERIOR CABINET DIMENSIONS REFLECT THE CABINET OPENING. PASS THROUGH OPENINGS WILL BE SMALLER.
 - 5.) DIMENSIONS FOR OVERALL HEIGHT AND OVERALL LENGTH ARE APPROXIMATE UNTIL THE CHASSIS IS BUILT AND RECEIVED AT OUR FACTORY.

INTERIOR DIMENSIONS

HEIGHT 75"

LENGTH 185"

WIDTH 90-3/4"



NOTICE

The drawings and data herein shall not be used for any purpose other than that intended by the manufacturer or manufacturer's representative, without the written permission of P1 Custom Body & Equipment Co., Inc. We reserve the right to make changes of any kind, without notice, in the design, materials, specifications, drawings which are for clarity only. All reproductions shall bear this notice.